

Chords and their related Modes and Scales

Major Chords

- CMaj7, CMaj9, CMaj6, CMaj13
 - Scale: C major
 - Mode: C Ionian
- Csus2, Csus4, Cadd2, Cadd4
 - Scale: C major
 - Mode: C Ionian
- CMaj7 (#4)
 - Scale: G major
 - Mode: C Lydian
- CMaj7 (#5), CMaj7 (#4,#5)
 - Scale: A melodic minor
 - Mode: C Lydian augmented
- CMaj7 (#5)
 - Scale: A harmonic minor
 - Mode: C Ionian Augmented

Minor Chords

- Cmin7, Cmin9, Cmin11, Cmin13, Cmin6
 - Scale: Bb Major
 - Mode: C Dorian
- Cmin7, Cmin7(b9,b6)
 - Scale: Ab Major
 - Mode: C Phrygian

typically written without alterations eg: Cmin7 especially when 'iii' chord
- Cmin7, Cmin7(b6)
 - Scale: Eb Major
 - Mode: C Aeolian

mostly written without alterations eg: Cmin7 especially when 'vi' chord
- Cmin(Maj7), Cmin6(Maj7), Cmin9(Maj7)
 - Scale: C melodic minor
 - Mode: C Altered, C Super Locrian, C diminished whole tone
- Cmin(Maj7), Cmin(Maj7,b6)
 - Scale: C harmonic minor
 - Mode: C harmonic minor
- Cmin7(b5), Cmin7(b9,b5)
 - Scale: Db Major
 - Mode: C Locrian
- Cmin7(b5), Cmin9(b5)
 - Scale: Eb Melodic Minor
 - Mode: C Locrian natural 2
- Cmin13(b9), Cmin7(b9)
 - Scale: Bb Melodic Minor
 - Mode: C Dorian b2

Dominant Chords

- C7, C9, C13
 - Scale: F Major
 - Mode: C Mixolydian
- C7(sus4), C9(sus4), C13(sus4), BbMaj7/C
 - Scale: F Major
 - Mode: C Mixolydian
- C7(alt), C7(#9), C7(b13,#9,b9,b5)
 - Scale: Db melodic minor
 - Mode: C Altered, C Super Locrian, C diminished whole tone
- C7(b9), C13(b9)
 - Scale: C H/W Diminished
 - Mode: C H/W
- C7(b13,b9)
 - Scale: F harmonic minor
 - Mode: C Phrygian Dominant
- C7(#11), C9(#11), C13(#11)
 - Scale: G Melodic Minor
 - Mode: C Lydian Dominant
- C7(b6)
 - Scale: F melodic minor
 - Mode: C Mixolydian b6
- C7sus4(b9)
 - Scale: Bb melodic minor
 - Mode: C Dorian b2 (suspend 3rd)
- C7(#5), C7(#5,#4)
 - Scale: C Whole Tone

Diminished Chords

- Cdim7
 - Scale: C W/H Diminished
 - Mode: C W/H
- Cdim7
 - Scale: Db harmonic minor
 - Mode: C Ultralocrian

Major Modes

Major Modes from C Major

Mode I

Parent Scale: C Major | Mode: C Ionian



Chords:

Csus2
Csus4
C6
CMaj9
CMaj7

Mode II

Parent Scale: C Major | Mode: D Dorian



Chords:

Cm11
Cm9
Cm6
Cm7

Mode III

Parent Scale: C Major | Mode: E Phrygian



Chords:

Cm7^(b9)
Cm7

Mode IV

Parent Scale: C Major | Mode: F Lydian



Chords:

CMaj13^(#11)
CMaj9^(#11)
CMaj7^(#11)

Mode V

Parent Scale: C Major | Mode: G Mixolydian



Chords:

C13sus4
C7sus4
C13
C9
C7

Mode VI

Parent Scale: C Major | Mode: A \flat Aeolian



Chords:

Cm7^(b13)
Cm7

Mode VII

Parent Scale: C Major | Mode: B Locrian



Chords:

Cm7^(b5)

Major Modes - C Root

Mode I

Parent Scale: C Major | Mode: C Ionian



Chords:

Csus2
Csus4
CMaj9
C6
CMaj7

Mode II

Parent Scale: Bb Major | Mode: C Dorian



Chords:

Cm11
Cm9
Cm6
Cm7

Mode III

Parent Scale: Ab Major | Mode: C Phrygian



Chords:

Cm7^(b9)
Cm7

Mode IV

Parent Scale: G Major | Mode: C Lydian



Chords:

CMaj13^(#11)
CMaj9^(#11)
CMaj7^(#11)

Mode V

Parent Scale: F Major | Mode: C Mixolydian



Chords:

C13sus4
C7sus4
C13
C9
C7

Mode VI

Parent Scale: Eb Major | Mode: C Aeolian



Chords:

Cm7^(b13)
Cm7

Mode VII

Parent Scale: Db Major | Mode: C Locrian



Chord:

Cm7^(b5)

Melodic Minor Modes

Melodic Minor Modes from C Melodic Minor

Mode I

Parent Scale: C Melodic Minor | Mode: C Min-Maj

Chords: Cm9(#7)
Cm(Maj7)

Mode II

Parent Scale: C Melodic Minor | Mode: D Dorian b2

Chords: D7sus4(b9)
Dm7(b9)

Mode III

Parent Scale: C Melodic Minor | Mode: Eb Lydian Augmented

Chords: EbMaj7(#5)
EbMaj7(#5)

Mode IV

Parent Scale: C Melodic Minor | Mode: F Lydian Dominant

Chords: F13(#11)
F9(#11)
F7(#11)

Mode V

Parent Scale: C Melodic Minor | Mode: G Mixolydian b6

Chord: G7(b13)

Mode VI

Parent Scale: C Melodic Minor | Mode: Ab Locrian b2

Chords: Am9(b5)
Am7(b5)

Mode VII

Parent Scale: C Melodic Minor | Mode: B Super Locrian, B Altered

Chords: B7(b13)
B7(b9 b13)
B7(alt)

Melodic Minor Modes - C Root

Mode I

Parent Scale: C Melodic Minor | Mode: C Min-Maj

Chords: Cm9(#7)
Cm(Maj7)

Mode II

Parent Scale: C Melodic Minor | Mode: C Dorian b2

Chords: C7sus4(b9)
Cm7(b9)

Mode III

Parent Scale: C Melodic Minor | Mode: C Lydian Augmented

Chords: CMaj7(#5)
CMaj7(#5 #4)

Mode IV

Parent Scale: C Melodic Minor | Mode: C Lydian Dominant

Chords: C13(#11)
C7(#11)
C9(#11)

Mode V

Parent Scale: C Melodic Minor | Mode: C Mixolydian b6

Chords: C7(b13)

Mode VI

Parent Scale: C Melodic Minor | Mode: C Locrian b2

Chords: Cm9(b5)
Cm7(b5)

Mode VII

Parent Scale: C Melodic Minor | Mode: C Super Locrian, C Altered

Chord: C7(b13 #9)
C7(alt)
C7(b9 b5 #9)

Harmonic Minor Modes

Harmonic Minor Modes from C Harmonic Minor

Mode I

Parent Scale: C harmonic minor | Mode: C harmonic minor, C aeolian #7

Chord:



Cm(Maj7)

Mode II

Parent Scale: C harmonic minor | Mode: D Phrygian #6



Mode III

Parent Scale: C harmonic minor | Mode: Eb Ionian Augmented

Chord:



EbMaj7(#5)

Mode IV

Parent Scale: C harmonic minor | Mode: F Lydian diminished



Mode V

Parent Scale: C harmonic minor | Mode: G Phrygian Dominant

Chord:



G7(b9)

Mode VI

Parent Scale: C harmonic minor | Mode: Ab Ionian Augmented



Mode VII

Parent Scale: C harmonic minor | Mode: B Ultralocrian

Chord:



B07

Harmonic Minor Modes - C Root

Mode I

Parent Scale: C harmonic minor | Mode: C harmonic minor, C aeolian #7

Chord:



Cm(Maj7)

Mode II

Parent Scale: Bb harmonic minor | Mode: C Phrygian #6



Mode III

Parent Scale: A harmonic minor | Mode: C Ionian Augmented

Chord:



CMaj7(#5)

Mode IV

Parent Scale: G harmonic minor | Mode: C Lydian diminished



Mode V

Parent Scale: F harmonic minor | Mode: C Phrygian Dominant

Chord:



C7(b9)

Mode VI

Parent Scale: E harmonic minor | Mode: C Ionian Augmented



Mode VII

Parent Scale: Db harmonic minor | Mode: C Ultralocrian

Chord:



C°7

Diminished (Octatonic) Scale

Diminished Shape 1

Parent Scale: C W/H

Chord: C^o7



Parent Scale: C H/W

Chord: C7^(b9)



Parent Scale: E♭ W/H

Chord: E♭^o7



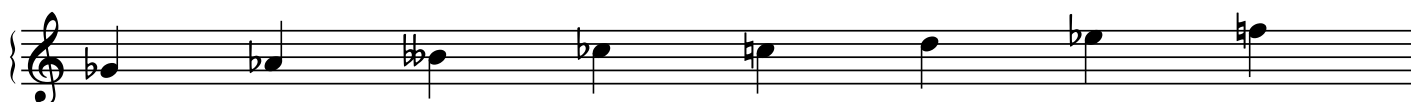
Parent Scale: E♭ H/W

Chord: E♭7^(b9)



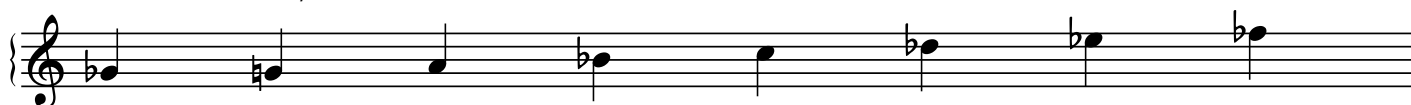
Parent Scale: G♭ W/H

Chord: G♭^o7



Parent Scale: G♭ H/W

Chord: G♭7^(b9)



Parent Scale: A W/H

Chord: A^o7



Parent Scale: A H/W

Chord: A7^(b9)



Diminished Shape 2

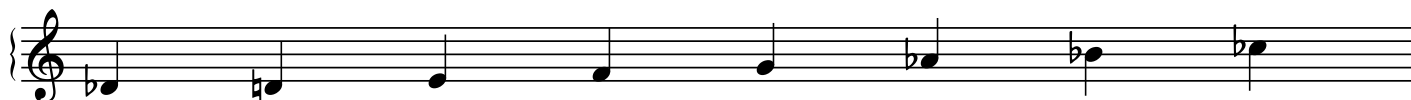
Parent Scale: Db W/H

Chord: Db^o7



Parent Scale: Db H/W

Chord: Db7^(b9)



Parent Scale: E W/H

Chord: E^o7



Parent Scale: E H/W

Chord: E7^(b9)



Parent Scale: G W/H

Chord: G^o7



Parent Scale: G H/W

Chord: G7^(b9)



Parent Scale: Bb W/H

Chord: Bb^o7



Parent Scale: Bb H/W

Chord: Bb7^(b9)



Diminished Shape 3

Parent Scale: D W/H

Chord: D^o7



Parent Scale: D H/W

Chord: D7^(b9)



Parent Scale: F W/H

Chord: F^o7



Parent Scale: F H/W

Chord: F7^(b9)



Parent Scale: Ab W/H

Chord: Ab^o7



Parent Scale: Ab H/W

Chord: Ab7^(b9)



Parent Scale: B W/H

Chord: B^o7



Parent Scale: B H/W

Chord: B7^(b9)

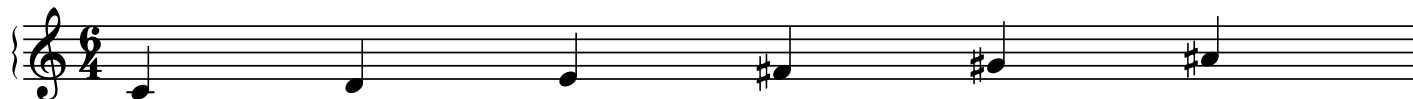


Whole Tone Scales

Whole Tone 1

Parent Scale: C Whole Tone

Chord: C7^(#5)_(#4)



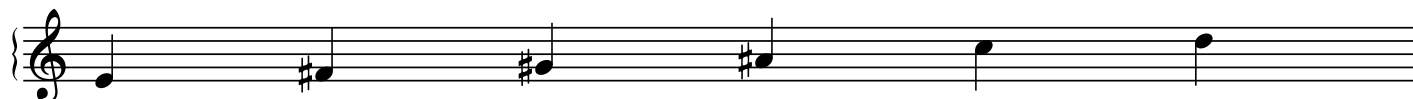
Parent Scale: D Whole Tone

Chord: D7^(#5)_(#4)



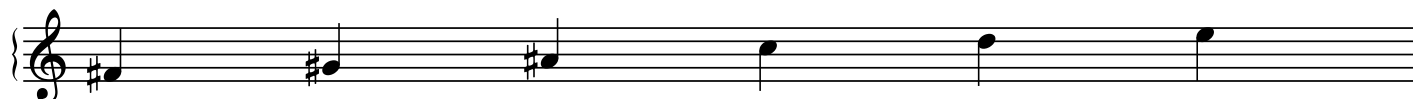
Parent Scale: E Whole Tone

Chord: E7^(#5)_(#4)



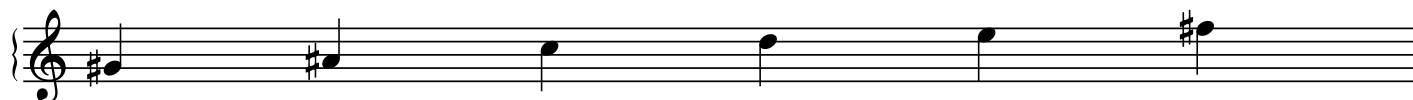
Parent Scale: F# Whole Tone

Chord: F#7^(#5)_(#4)



Parent Scale: G# Whole Tone

Chord: G#7^(#5)_(#4)



Parent Scale: A# Whole Tone

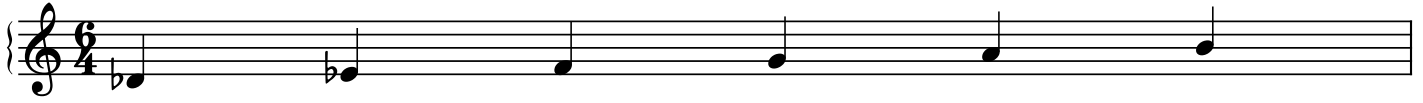
Chords: A#7^(#5)_(#4)



Whole Tone II

Parent Scale: C Whole Tone

Chord: $D\flat 7^{(\#5)}_{(\#4)}$



Parent Scale: D Whole Tone

Chord: $E\flat 7^{(\#5)}_{(\#4)}$



Parent Scale: E Whole Tone

Chord: $F 7^{(\#5)}_{(\#4)}$



Parent Scale: F# Whole Tone

Chord: $G 7^{(\#5)}_{(\#4)}$



Parent Scale: G# Whole Tone

Chord: $A 7^{(\#5)}_{(\#4)}$



Parent Scale: A# Whole Tone

Chords: $B 7^{(\#5)}_{(\#4)}$

